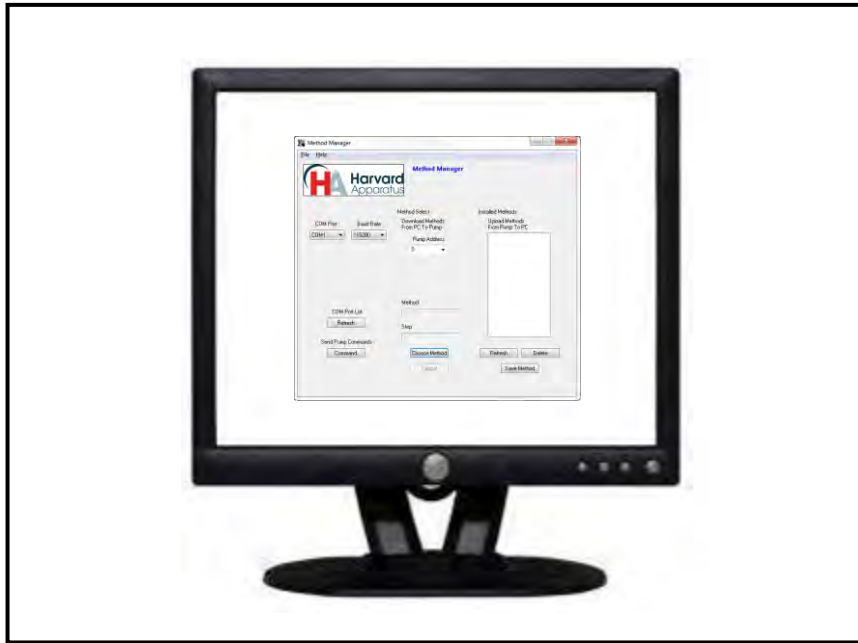


Method Manager

User's Manual



Installation

Insert the pump CD ROM; a file containing the CD's contents will open automatically. Navigate to the Method Manager folder, under Pump Applications. Right click on "Method Manager". Select "Send To" then "Desktop" to create a shortcut on your desktop.

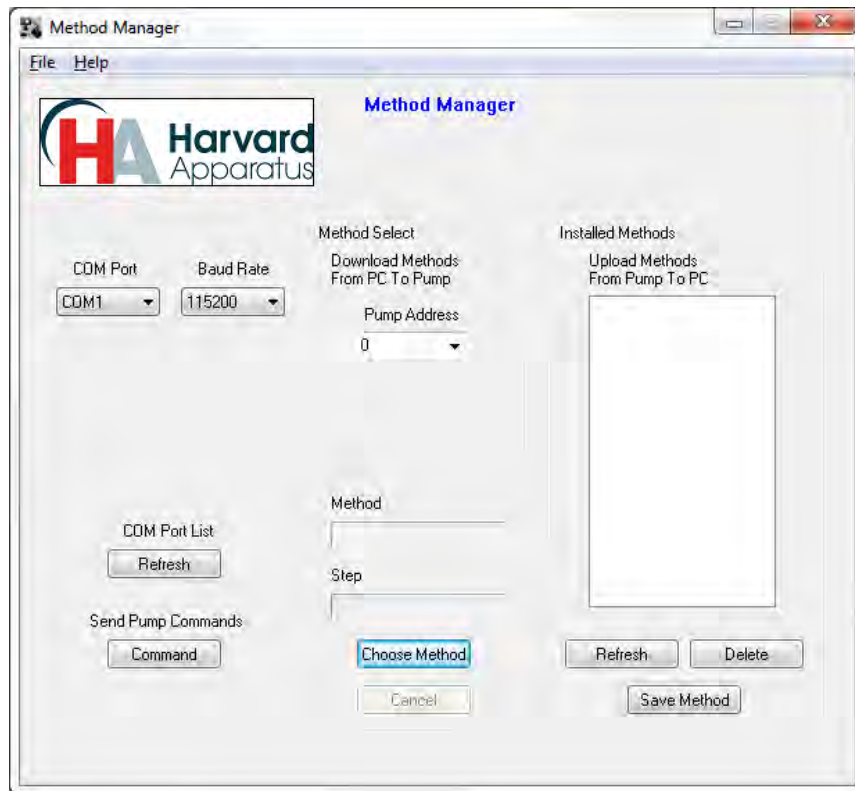
*Compatible with Windows 2000, XP, Vista, & Windows 7

1. Connect the pump to the PC using either an RS-232 or USB cable
2. Turn pump on
3. Start Method Manager
4. Select the proper COM port
5. Select the Baud Rate in Method Manager that matches the pump's Baud Rate (RS-232 only)

Overview

Method Manager allows the user to:

- Upload methods from the pump to a PC
- Download methods from PC to Pump
- Send commands to the pump using a PC



Pump Command
Line *

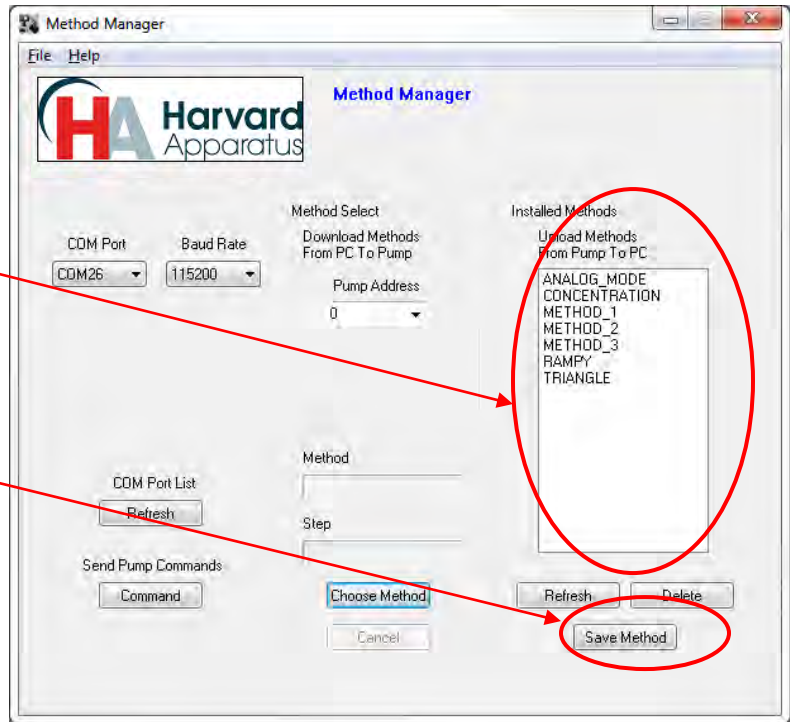
PC → Pump
Method Control
(programmable
pumps only)

Pump → PC
Method Control
(programmable
pumps only)

Upload – Pump to PC

1. Select Method(s)

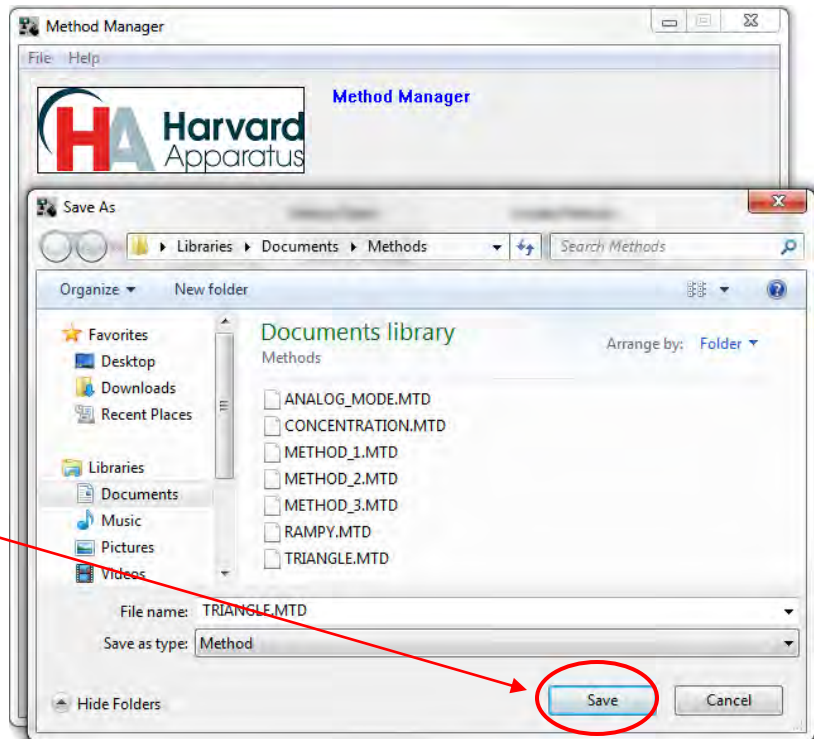
2. Click 'Save Method'



NOTE: Hit 'Refresh' to update the list after creating or editing methods on the pump

3. Select the drive and folder location

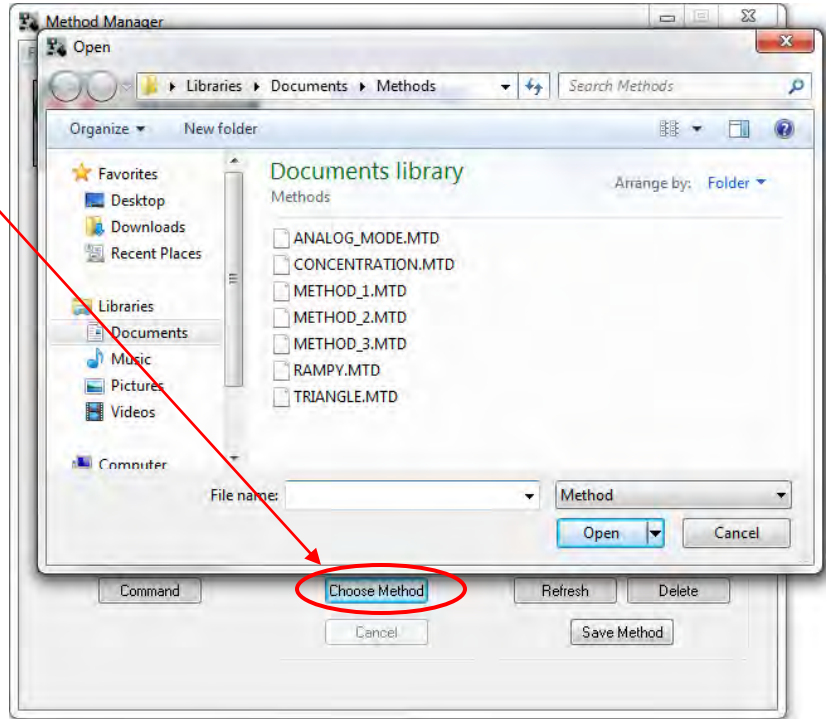
4. Click 'Save'



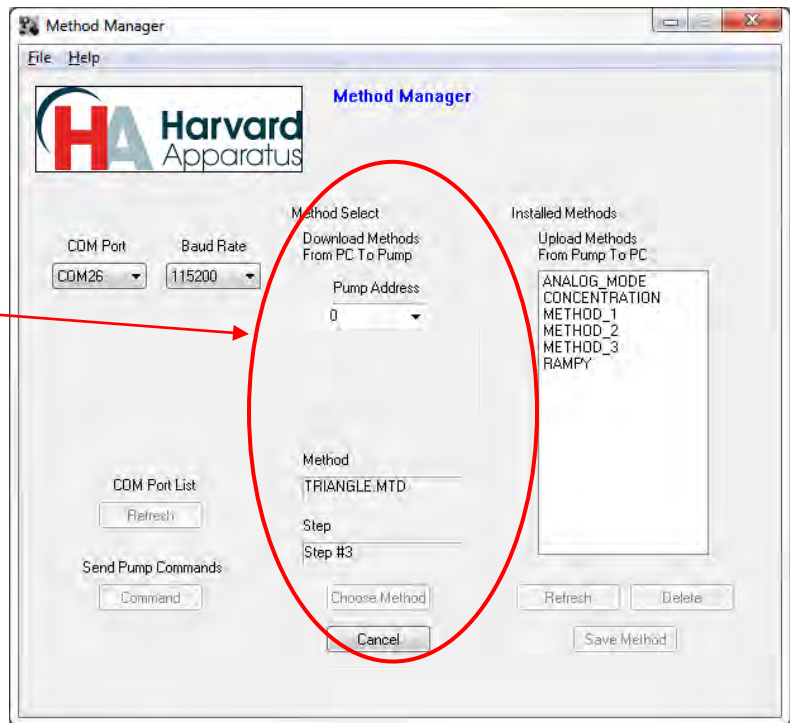
*Do not upload/download methods while pump is running
Program works best while pump is idle on Quick Start or Pump Mode setup screen

Download – PC to Pump

1. Click 'Choose Method'
2. Select Method(s) to download



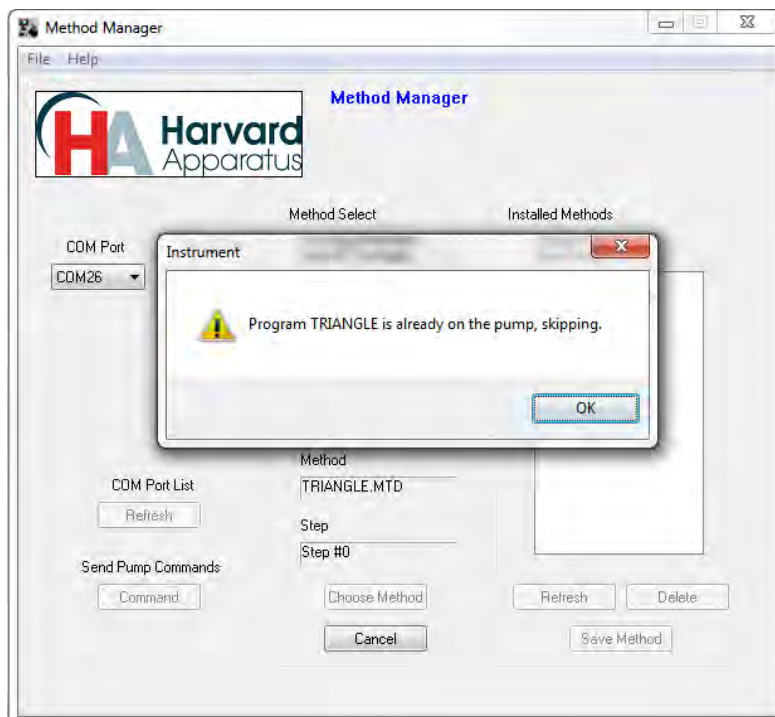
3. Method name and step number being downloaded is shown



*Do not upload/download methods while pump is running
Program works best while pump is idle on Quick Start or Pump Mode setup screen

If a method already exists on the pump, Method Manager will not overwrite the file if you attempt to re-download it

NOTE: Changing a file name, on the PC, will not change the method name within the file

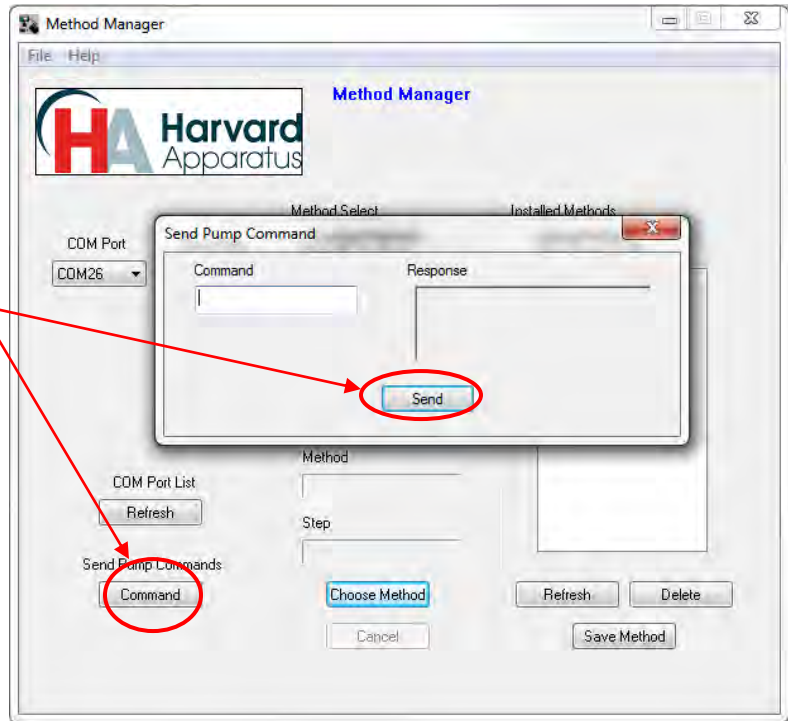


Sending Commands to the Pump

1. Click 'Command'
2. Type commands
3. Click 'Send'

Note 1: See pump user manual for complete list of commands

Note 2: If unexpected responses are seen, type 'echo off'



Troubleshooting

1. Do not upload/download methods while pump is running
 - Program works best while pump is idle on Quick Start or Pump Mode setup screen
2. Order of Operations:
 - Connect USB or RS-232 cable
 - Turn pump on
 - Start Method Manager program
3. If using RS-232, check Baud rate – pump vs. program
4. Message 'Pump not Programmable'
 - If not a programmable pump – contact Harvard Apparatus for an upgrade
 - If pump is programmable – go to command line and type 'echo'; if echo is on, type 'echo off'