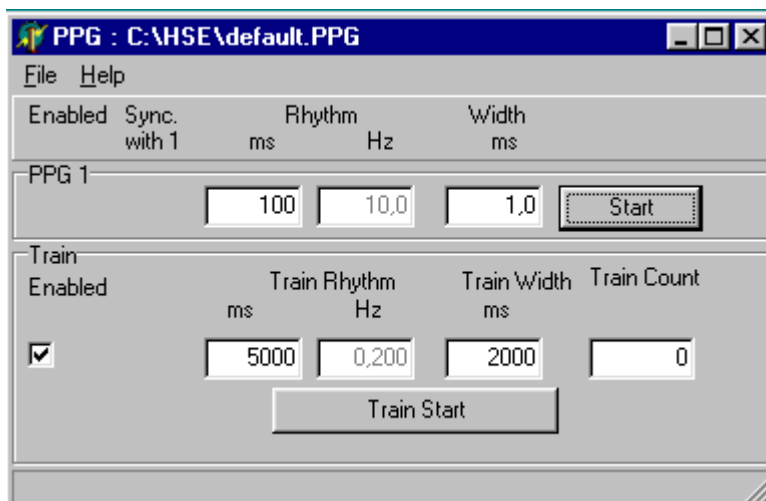


# USER MANUAL

## PPG Control Software for Microsoft® Windows® 98 / ME / NT / 2000 / XP

Version 1.0 / Feb. 2002

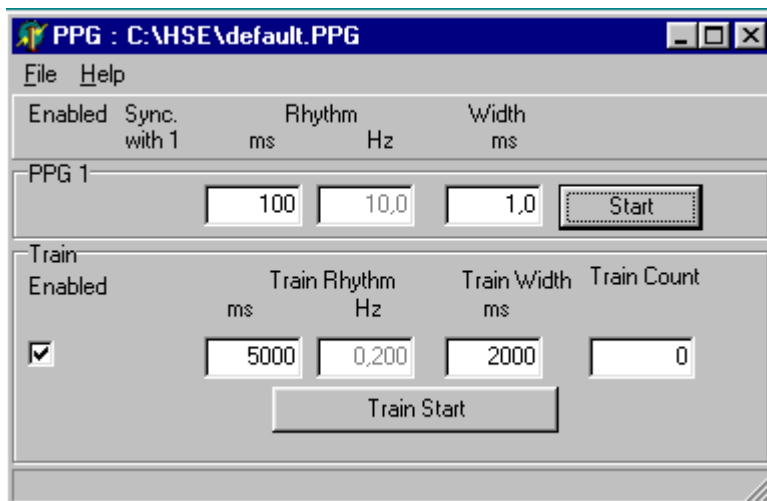


## Table of contents

Stimulator settings .....	3
Introduction .....	3
Menu description .....	4
Train settings .....	4

### Introduction

The PPG control software is used to control (gate) external devices e.g. the HSE Universal Isolated Stimulus Output UIISO. It can drive up to 4 TTL loads (4 UIISOs) by software. It is possible to start the attached stimulator module UIISO as free running stimulator or in a train mode where trains are used to stimulate a tissue. To open the menu below click in your data acquisition software on menu item Window - Stimulator. If you do not have a HSE data acquisition software click on START - PROGRAMMS There you will find a PPG button to start the PPG control software.

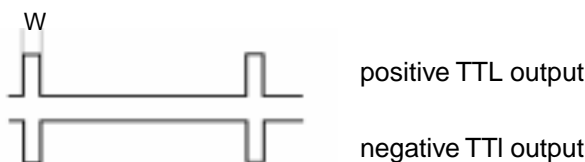


This is an example menu with one PPG modules controlled

### Stimulator settings

On your UIISO you can set positive, negative or alternating stimulation mode. On a knob you can set the amplitude. The PPG only delivers the Basic Rhythm and the puls width W.

Connect your UIISO via the BNC cable to the PPG module. BNC socket is on the rear of the UIISO. Normal setting of the gate input is negative TTL pulse. So choose the negative BNC output (lower BNC) connector to connect to UIISO. If you connect the PPG to an other device check which TTL input ( positive or neg. pulses) is required to gate your unit.



### Menu description

The menu of the PPG control software is very easy

Here you set the basic Rhythm in ms

Here the corresponding frequency in Hz is displayed

Here you set puls width which should be used

Enable Train mode

Train-Rhythm in milliseconds

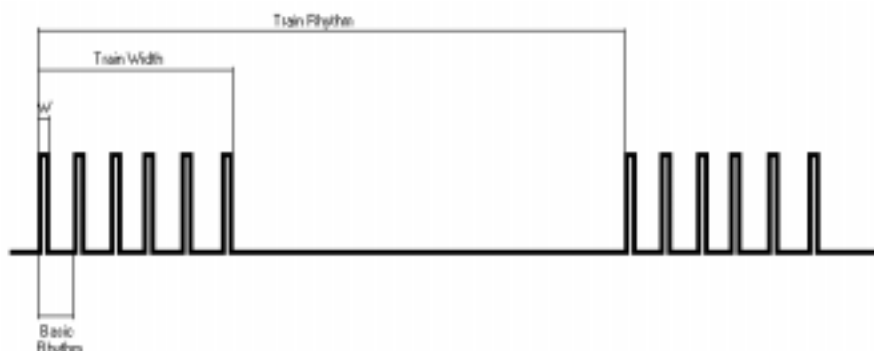
Train-Rhythm in Hz  
( $Tr-Rh[Hz] = 1 / Tr-Rh[ms] * 1000ms/s$ )

Train-Width in milliseconds

Train-Counter

### Train settings

Depending on the settings in the menu you will get a train output like displayed below.



In the field "Train Counter" the number of trains can be defined. If you press start the defined number of trains are performed. If you set "Train-Counter" to 0 continuously trains are performed according to the settings of Train-Rhythm and Train-Width.